

FOREST EQUIPMENT



EDER
MASCHINENBAU GmbH

EDER - Maschinenbau GmbH
Schweigerstraße 6
D-38302 Wolfenbüttel
Phone +49 (0) 5331 / 90216-30
www.eder-maschinenbau.de
vertrieb@eder-maschinenbau.de

Table of contents

EDER - WINCHES.....	3	
EDER - WINCH 1200 S	6	
EDER - BATTERY WINCH	7	
EDER - WINCH 500 B ACCESSOIRES	9	
EDER - WINCHES ACCESSOIRES	10	
EDER - DAWINCHI BOLLARD	13	
EDER - ASCENDER	14	
EDER - ASCENDER TECHNICAL DETAILS.....	15	
EDER - BATTERY ASCENDER	16	
EDER - ASCENDER ACCESSOIRES	17	
EDER - SMALL FELLING WEDGE	18	
EDER - TITAN 80 PRO	19	
EDER - REMOTE TITAN 80.....	20	
EDER - JACK	21	
EDER - HYDRAULIC REMOTE FELLING WEDGE SYSTEM.....	22	
EDER - HYDRAULIC REMOTE CONTROLLED FELLING CYLINDERSYSTEM		23
EDER - TRUNK PRESS	24	
EDER - ATTACHMENTS WITH CHAIN DRIVE	26	
EDER - ATTACHMENTS WITH V-BELT DRIVE	28	
EDER - EYE CUTTER.....	30	
EDER - PRESS TOOL.....	31	
EDER - PRESS TOOL DRIVE VARIANTS	33	
EDER - SPLITTING DEVICE	34	
EDER - HYDRAULIC UNIT	34	

EDER - WINCHES



The lightweight, portable winches are suitable for synthetic ropes of any length. The devices allow all functions such as pulling, holding and releasing the load, which can be controlled from a safe distance.

Advantages over conventional products:

- All EDER - WINCHES are driven by a centrifugal clutch. This means that the capstan stops as soon as the user releases the throttle. With conventional winches, the capstan continues to run at idle speed. This prevents the rope from rubbing on the capstan and the load from moving uncontrollably.
- All EDER - WINCHES are equipped with a rope brake. As soon as the user releases the rope (intentionally or unintentionally), the rope brake is activated. The load stops immediately and cannot slip back.
- All EDER - WINCHES are designed and certified according to applicable standards and guidelines.
- All EDER - WINCHES can work in any position.



Article-no.: 200000

EDER - WINCH 500

The Lightweight One!

Capacity: 500 kg

Speed: 12 m/min

Weight: 8 kg

Motor: 4-stroke engine



Article-no.: 230000

EDER - WINCH 400

The Fast One!

Capacity: 400 kg

Speed: 40 m/min

Weight: 13 kg

Motor: Active 2-stroke engine





Article-no.: 220000A

EDER - WINCH 1200

The Allrounder!

Capacity: 1200 kg

Speed: 14 m/min

Weight: 13 kg

Motor: Active 2-stroke engine



Article-no.: 210000

EDER - WINCH 1800*

The Powerful One!

Capacity: 900 kg 1800 kg

Speed: 24 m/min 12 m/min

Weight: 14 kg

Motor: Active 2-stroke engine



*NOTE

Available in Germany and Austria as
"Nordforest Spillwinde 1800" from the
company Grube KG (www.grube.de /
www.grube.at)

NEW
Available in stores
from 01.10.25

EDER - WINCH 1200 S



Article-no.: 220000S



EDER - WINCH 1200 S

The Allrounder with STIHL Motor!

Capacity: 1200 kg
Speed: 13 m/min
Weight: 13,6 kg
Motor: STIHL 2-stroke engine

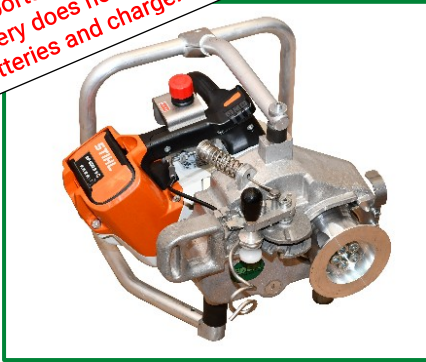
When maximum performance and absolute reliability are required, the **EDER - WINCH 1200 S**, powered by a **2.8 kW STIHL engine**, is the right choice.
It offers the following state-of-the-art engine technologies:

- **STIHL M-Tronic** - Fully electronic engine management for optimum performance under all conditions. No more manual adjustments necessary, the winch is always ready for use.
- **STIHL ErgoStart** - for effortless starting with minimal force (a gentle pull is enough).
- **STIHL Compensator** - constant engine power. More efficiency, less maintenance.

Its compact design and robust housing make the **EDER - WINCH 1200 S** the perfect companion for mobile applications. Whether tree felling, skidding, or material recovery, this winch impresses with its power, precision, and durable technology.

EDER - WINCH 1200 S - Compact, powerful, uncompromising.

Important note:
The delivery does not include
Stihl batteries and chargers!



Article-no.: 220000B



EDER - BATTERY WINCH

EDER - WINCH 1200 B

The Electrical!

Capacity: 1200 kg
Speed: 13 m/min
Weight: 12 kg
Motor: Stihl battery motor
Battery running time: ca. 15-20 minutes
at maximum load



The **EDER - WINCH 1200 B** combines impressive performance with modern comfort. Powered by the reliable STIHL battery system, it offers a pulling force of up to 1200 kg at a speed of 13 m/min – powerful enough for demanding applications in forestry, construction sites, or gardening and landscaping.

Advantages at a glance:

- Up to 1200 kg pulling force
- 13 m/min speed
- Lightweight and compact at 12 kg
- STIHL battery drive: emission-free, low-maintenance, versatile
- One battery - many possible applications

The **EDER - WINCH 1200 B** - for anyone who wants to combine pulling power with freedom.

NEW
Available in stores
from 01.10.25

EDER - BATTERY WINCH

Important note:
The delivery does not include
Stihl batteries and chargers!



Article-no.: 600000B



EDER - WINCH 500 B

The light Electrical!

Lifting/pulling force: 500 kg
Speed:

Max. Speed 11,5m/min

Lifting (500kg): 8m/min

Ground pull (500kg): 9,5m/min

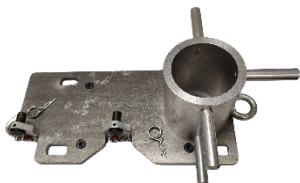
Weight: 6,5 kg without battery

Motor: Stihl battery motor

The **EDER - Winch 500 B** is characterized by a low weight of only 6.5 kg, with a continuous lifting and pulling capacity of 500 kg. Cordless and emission-free thanks to STIHL battery power, it is the ideal solution for a wide range of applications, such as game recovery, removing hangers, pulling cables, or transporting building materials.

Matching accessories such as a rigging plate, slinging aid or trailer coupling make the **EDER - Winch 500 B** even more flexible. In addition, the pulling force can be increased by up to a factor of 7 to 3.5 t using suitable deflection pulleys.

The **EDER - WINCH 500 B** - a flexible and lightweight helper for a wide range of applications.



Article-no.: 601001

EDER - rigging plate for EDER - WINCH 500 B

Weight: 5,2 kg

Dimensions: 470x240x170mm

Max. Lifting force with EDER - Winch 500 B: 500kg

Max. payload: 1000 kg

The EDER – rigging plate enables the lifting and lowering of dynamically falling loads of up to 1000 kg via the rigid bollard. The rigging plate is attached to the boom with tensioning straps and the winch can then be conveniently attached to the bollard using pins.



Article-no.: 601101

EDER - Slinging aid for EDER - WINCH 500 B

Weight: 1,4 kg

Dimensions: 177x120x75mm

Max. payload: 750 kg

The slinging aid is conveniently attached to a suitable attachment point (e.g. tree trunk) using a tensioning strap. The EDER - Winch 500 B is then attached to the slinging aid using a pin. The winch is now in the perfect working position and can align itself with the load. This means that the winch always remains in position even without a taut working cable and is not in danger of hitting the ground.



Article-no.: 601201

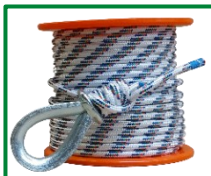
EDER - Trailer coupling for EDER - WINCH 500 B

Weight: 0,36 kg

Dimensions: 200x80x70 mm

Max. payload: 750 kg

The trailer coupling for the EDER - Winch 500 B is suitable for all conventional ball head trailer couplings. First the trailer coupling is placed over the ball head, then the Winch 500 B is attached to the trailer coupling using a plug-in bolt.



Article-no.: 601301 o. 601302

Rope with wire thimble for**EDER - WINCH 500 B in 50m, 100m or in individual lengths**

Ø 8 mm

breaking load 2,4 t



Article-no.: 211309
Tauwerk-Soft-Shackle
max. capacity 4 t
Breaking load 8 t



Article-no.: 211305
Sling
max. capacity 2 t
(Length 2 m)



Article-no.: 211308
Choker Chain
8 mm, 3 m long
max. capacity 4 t
Breaking load 8 t

Slings:

max. capacity 3 t (Length 2m) Article-no.: 710121
max. capacity 4 t (Length 2m) Article-no.: 710122
max. capacity 6 t (Length 2m) Article-no.: 710200



Article-no.: 211310
Shackle with threaded pin
max. capacity 2 t



Article-no.: 211306
Nordwand Hook
max. capacity 2 t

Shackle with threaded pin
max. capacity 4,75 t Article-no.: 710402

EDER - WINCHES ACCESSOIRES



**Rope with wire thimble for
EDER - WINCH1800**
in 50m, 100m or in
individual lengths
breaking load 5100 daN
Ø 13 mm



Article-no.: 211301 o. 211302



**Rope with wire thimble for
EDER - WINCH 400, 1200, 1200 S and 1200 B**
in 50m, 100m, 200m or in individual lengths
breaking load 3600 daN
Ø 9,5 mm



Article-no.: 220902, 220903 or 220906



**Accessories set for
EDER - WINCH 1800**
with 50m or 100m rope,
rope bag, sling, steel pulley,
shackle, rope soft shackle
and choker chain

Article-no.: 211318 o. 211319



**Accessories set for
EDER - WINCH 400, 1200, 1200 S and 1200 B**
with 50m or 100m rope,
rope bag, sling, steel pulley, shackle, rope
soft shackle and choker chain

Article-no.: 220911 or 220912



Rope bag
capacity: 45 L
max. capacity load: 19 kg

Article-no.: 211311



EDER - Tree pulling rope
Novolem Power Ø 20mm in
20m, 30m, 40m or 50m with
braided loops 200mm
Breaking load 25t

Article-no.: 712000, 712001, 712002 or 712003

EDER - PULLEY

With the EDER single, double or triple deflection pulleys for ground traction, an extremely powerful rope system can be set up, especially in combination with the EDER - Winches, which can be carried comfortably by hand. The EDER - deflection pulleys are characterised by attachment points on both sides. When pulling off hangers, a deflection pulley can be installed as an additional "loose pulley" in the rope line. Thus, the pulling force can be increased by a factor of up to 7 (with a triple deflection pulley) or 5 and 3 (with double and single deflection pulleys) depending on the deflection pulley used. With an appropriate set-up, a tractive force of 12.6 tons can be achieved with our EDER - WINCH 1800.



Article-no.: 710101

1-fold Pulley

1,9 kg incl. shackle
Capacity: 5,5 t
max. rope diameter:
9mm - 13mm



Article-no.: 710102

2-fold Pulley

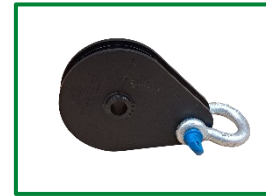
3,2 kg incl. shackle
Capacity: 9 t
max. rope diameter:
9mm - 13mm



Article-no.: 710103

3-fold Pulley

4 kg incl. shackle
Capacity: 12,6 t
max. rope diameter:
9mm - 13mm



Article-no.: 710400

Pulley steel

2,7 kg incl. shackle
Capacity: 3,6 t
max. rope diameter:
9mm - 13mm

NEW
Available in stores
from 01.10.25

EDER - DAWINCHI BOLLARD



Article-no.: 640000



EDER - daWinchi bollard

Weight incl. Drive rod: 17 kg

Working load: 10 kN

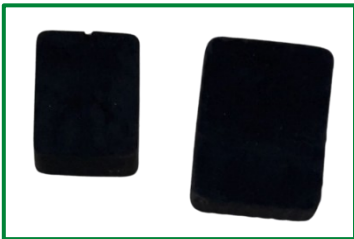
Breaking load: 50 kN

The **EDER - daWinchi bollard** combines the function of a winch and a conventional bollard in one device. As the central drum can be rotated in one direction, it is possible to switch between lowering and winching without having to convert the rope. The drive rod included in the scope of delivery is used to drive the drum of the winches. To position the bollard conveniently, the winch can be temporarily attached to the trunk with an integrated steel nail. It is then attached to the tree with two tensioning straps (not included).

To prevent damage to the tree, a tree guard, available as an accessory, can be used for a payload of up to 5 kN.

Tree protection jaws for the EDER - daWinchi bollard

two-part, in mm (upper: 40 x 100 x 120, underside: 30 x 120 x 160)



Article-no.: 640031

EDER - ASCENDER



The **EDER - ASCENDER EPC 130- 11** is designed for the transportation of one user with equipment and, if necessary, materials on a vertical rope up to 130 kg.

The **EDER - ASCENDER EPC 240- 11** is designed for the transportation of one user with equipment and, if necessary, materials, as well as for the transportation of another person on a vertical rope up to 240 kg (e.g. in rescue operations).

The **EDER - ASCENDER EPC 130- 11** are driven by a 2 HP 4-stroke engine and the **EDER - ASCENDER EPC 240- 11** by a 2,68 HP 2-stroke engine. Both engines can be conveniently restarted at working height by means of an Easy-Start starte.



Article-no.: 270001H

Technical Details: EPC-130-11 with 11 mm rope

Permissible payload: 130 kg

Weight: 11,2 kg

Drive up speed: 0,5 m/s (130 kg)

Drive down speed: 0,3 m/s

Rope: Teufelberger Patron Plus 11mm, BEAL Industrie 11 mm, Edelrid Static Low

Stretch 11 mm oder Edelrid Interstatic Protect 11 mm

Dimensions: 30x27x36 cm

Motor type: Honda GX50 (2 hp)

Tank capacity: 0,63 L

Displacement motor: 47,9 cm³



Article-no.: 270001K

Technical Details: EPC-240-11 with 11 mm rope

Permissible payload: 240 kg (max. 2 persons)

Weight: 11,5 kg

Drive up speed: max. 0,4 m/s (240 kg), max. 0,6 m/s (130 kg)

Drive down speed: 0,3 m/s

Rope: Teufelberger Patron Plus 11mm, BEAL Industrie 11 mm, Edelrid Static Low

Stretch 11 mm oder Edelrid Interstatic Protect 11 mm

Dimensions: 30x28x39 cm

Motor type: Kawasaki TJ53 (2,68 hp)

Tank capacity: 1,1 L

Displacement motor: 53,2 cm³

fuel: 2-stroke special fuel

**Important note:
The delivery does not include Stihl
batteries and chargers!**



Article-no.: 270001B

Technical Details: EPC-240-11 B with 11 mm rope

Permissible payload: 240 kg (max. 2 persons)

Weight: 10,5 kg

Drive up speed: max. 0,6 m/s

Drive down speed: 0,3 m/s

Rope: Teufelberger Patron Plus 11mm, BEAL Industrie

11 mm, Edelrid Static Low Stretch 11 mm oder Edelrid

Interstatic Protect 11 mm

Dimensions: 30x40x30 cm

Battery running time: between 200 – 300 meters

Motor Type: Stihl battery motor

The **EDER - ASCENDER EPC-240 B** is the ideal rope climbing device for working at heights, rescue operations, or tree care. With a climbing speed of 36 m/min and a payload of 240 kg, it takes you up safely and efficiently.

Advantages at a glance:

- Certified for rescues and two people
- STIHL battery drive: cordless, emission-free
- Low weight of 10.5kg
- Permissible payload: 240kg
- Compact, lightweight, and easy to use

The **EDER - ASCENDER EPC-240 B** - maximum safety and performance for anyone who needs to reach great heights.



Transport box for the
EPC- 240- 11 B

Article-no.: 290216



STIHL Powerbox suitable for
EPC- 240-11 B and Winch 1200 B
includes 2x accu AP500S + charger

Article-no.: 290209



STIHL AL 500
quick charger
suitable for
STIHL 500S
and 300S accu

Article-no.: 290202



STIHL AP 500S accu
suitable for
EPC- 240-11 B, EDER -
WINCH 1200 B and
EDER - WINCH 500 B

Article-no.: 290203



rope 100 m with rope
bag for the EPC-130-11,
EPC- 240-11 and EPC-
240- 11 B
Ø 11 mm rope of the
Teufelberger brand

Article-no.: 279006

EDER - SMALL FELLING WEDGE

Technical Data:

Weight 1,6 kg
LxBxH 240mm x 118mm x 72mm
Wedge feed 100mm
Stroke / revolution 2mm
max. lifting force 15t
max. lifting height 50mm



Article-no.: 500001 with ratchet o.
500000 without ratchet



Article-no.: 500006 Titan 50 +
Battery powered drill + battery + charger



Article-no.: 500126 wedge
pocket for the Titan 50

The **EDER - Titan 50** is the smaller version of the proven EDER - Titan 80 Pro. It is used in heavy timber harvesting and is an alternative to heavy wedge work. Compared to classic wedge variants, the EDER - Titan 50 has the following advantages:

- It can be operated with a 3/8" or 1/2" impact wrench up to a 750 Nm.
- Backscrewing and re-setting of the wedge is possible if the lifting height is too low.
- Power-saving and ergonomically favorable work due to high lifting forces and gear ratios.
- Increased safety when felling on slopes.
- Danger of falling deadwood is reduced by vibration-free wedging.
- Encapsulated drive spindle prevents contamination and resulting damage to the drive.
- Easy to transportation on the forestry coupler - set with the wedge pocket for the Titan 50.

Technical Data:

Weight 5,6 kg

LxWxH 410mm x 90mm x 170mm

Wedge feed 160mm

Stroke / revolution 3mm

max. lifting capacity 25t

max. lifting height 80mm



Article-no.: 300001 with ratchet o.
300003 without ratchet



Article-no.: 300006 Titan 80 Pro +
Battery powered drill + battery + charger

The **EDER - Titan 80 Pro** is a further development of the proven EDER - Titan 80. It is used in heavy timber harvesting and is an alternative to heavy wedge work. Compared to the classic wedge variants, the EDER - Titan 80 Pro has the following advantages:

- It can be operated with an impact wrench up to 1360 Nm.
- It is possible to screw back and readjust the wedge if the lifting height is too low.
- Power-saving and ergonomically favourable work due to high lifting forces and ratios.
- Increased safety when felling on slopes.
- The risk of falling deadwood is reduced by the vibration-free wedging.
- Encapsulated drive spindle prevents dirt and resulting damage to the drive.

EDER - REMOTE TITAN 80

Technical Data:

Weight 8,8 kg
LxWxH 620mm x 120mm x 180mm
Wedge feed 160mm
Stroke / revolution 3mm
max. lifting capacity 25t
max. lifting height 80mm
incl. 5Ah battery
incl. Carrier bag



Article-no.: 300004

The **EDER - Remote Titan 80** is a further development of the proven EDER - Titan 80 Pro. It is used in heavy timber harvesting and is an alternative to heavy wedge work. Compared to the classic wedge variants, the EDER - Remote Titan 80 has the following advantages:

- It can be operated from a safe distance (approx. 80m) via radio with a remote control.
- Due to the compact design of the EDER - Remote Titan 80, it can be carried comfortably with the carrying strap on the back or in the hand.
- Encapsulated drive spindle prevents dirt and resulting damage to the drive.
- The drop guard prevents falling on steep terrain.



Article-no.: 710701

Low Jack

Technical Data:

Weight 9 kg
Stroke 100mm
on 40mm 17t lifting force
On the remaining 60mm 11t lifting capacity
installation height 140mm
Height adjustment 30mm
500mm lifting rod



Article-no.: 710702

Strong Jack

Technical Data:

Weight 17 kg
Stroke > 200mm
30t lifting force
Height adjustment 50mm
500mm lifting rod

Advantages over conventional felling jacks:

- Perfect angle compensation, through a ball head mounted pressure plate.
- The height adjustment can be conveniently made with the chainsaw keys through the pressure plate.
- The carrying strap and handle are used for convenient transportation.

EDER - HYDRAULIC REMOTE FELLING WEDGE SYSTEM



Article-no.: 520001; 520002 o. 520003

Technical Data:

Article- no.: 520001

Weight 12,8 kg
max. lifting capacity 32t
max. lifting height 68mm

Article- no.: 520002

Weight 14,4 kg
max. lifting capacity 35t
max. lifting height 95mm

Article- no.: 520003

Weight 17,8 kg
max. lifting capacity 55t
max. lifting height 114mm

The hydraulic remote control felling wedge systems are suitable for heavy timber and are driven by a 700 bar battery-powered pump. The remote control allows felling to be carried out from a safe distance. The ergonomic back carrier frame offers comfortable transportation through any terrain.

The remote-controlled felling system is available in three sizes:
consisting of battery pump, hand-held transmitter, charger, 5 Ah battery, felling head, 2 m high-pressure hose line and carrying system.

EDER - HYDRAULIC REMOTE CONTROLLED FELLING CYLINDERSYSTEM



Technical Data :

Article- no.: 520004
Weight 14,4 kg
max. lifting capacity 32t
max. lifting height 100mm

Article- no.: 520005
Weight 18,4 kg
max. lifting capacity 55t
max. lifting height 100mm

Article-no.: 520004 o. 520005

The hydraulic remote-controlled felling cylinder systems are suitable for over-heavy timber and pick up where the felling wedges leave off. They are powered by a 700 bar battery-powered pump. The remote control allows felling to be carried out from a safe distance. The ergonomic back carrying frame offers comfortable transportation through any terrain.

The remote-controlled felling system is available in two sizes:
consisting of battery pump, hand-held transmitter, charger, 5 Ah battery, universal felling cylinder, 2 m high-pressure hose line and carrying system.



EDER - trunk presses prevent tearing of the trunk during the felling process and ensure safe tree felling. In addition to the safety aspect, EDER - trunk presses are used for value timber extraction.

Application:

The EDER - trunk press prevents the tearing open of trees or lying trunks when used correctly. Especially with trees under tension or when using technical felling aids, the EDER - trunk press can improve the safety during felling.

Article-no.: 710205

Log press 10 t

Belt width: 50 mm

Belt length: 3 m to BHD 0,8 m

Prestressing force: approx. 800 kg

Weight: 2,4 kg

Breaking load: 10 t

Article-no.: 710206

Trunk press with clamping device 20 t

Belt width: 50 mm

Belt length: 8 m to BHD 1,4 m

Prestressing force: approx. 1,5 t

Weight: 3,8 kg

Breaking load: 20 t, belt folded over twice

Article-no.: 710207

Log press: 20 t

Belt width: 75 mm

Belt length: 4 m to BHD 1,4 m

Prestressing force: approx. 950 kg

Weight: 4,4 kg

Breaking load: 20 t

Article-no.: 710208

Trunk press with clamping device 40 t

Belt width: 75 mm

Belt length: 9,5 m to BHD 1,4 m

Prestressing force: approx. 2 t

Weight: 7,6 kg

Breaking load: 40 t, belt folded over twice



EDER - ATTACHMENTS WITH CHAIN DRIVE

Our chainsaw attachments are available with chain drive and belt drive. The chain-drive version impresses with its easy conversion, whereby the chainsaw remains in its original form and the possibility of dismantling it (removal of the oil pump is not necessary). The combination of a guide bar as a carrier, a toothless chain as a drive and a complete cover as protection enables low-wear and safe working.

The chain drive includes a guide bar that can be fitted quickly and easily to almost **all chainsaws with 3/8" and 325" pitch**, as usual. The chain is additionally covered with a guard plate for maximum safety. The chain drive impresses with its direct drive and long service life of chain, bar and sprocket.



ESG-C Bark Stripper

Quickly strips the bark from logs of any diameter.

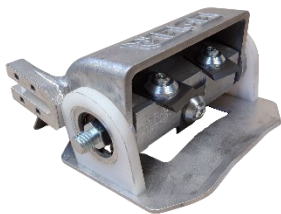
Article-no.: 400200



EPH-C Flat Planer

Creation of smooth flat wood surfaces.

Article-no.: 400600



ERH-C Curved Planer

Creation of smooth round wood surfaces up to 30 cm in diameter.

Article-no.: 400700



ESF-C Carving Cutter

Creating grooves and recesses in wood and for working sculptures.

Article-no.: 401300



EKH-C Contour Planer

Planes straight and curved surfaces of wood. Very suitable for peeling or planing the outer edges of boards or for debarking Robinia wood.

Article-no.: 401900



ENF-C Groove Cutter

Milling of recesses with different working widths (10 mm; 20 mm; 30 mm) e.g. for cable ducts or feather key / groove

Article-no.: 400800



Article-no.: 401500

ERB-C Wire Brush

For the swift removal of old paint or weathering from wood or rust from metals.



Article-no.: 400900

EBF-C Bark Beetle Cutter

For scratching tree trunks in order to deprive the bark beetle of its habitat.



Article-no.:
401402 w. 3/8"-pitch + 8mm;
401403 w. 325"-pitch + 8mm;
401404 w. 3/8"-pitch + 12mm;
401405 w. 325"-pitch + 12mm

ETH-C Trough Cutter

Designed for quickly carving troughs in logs for animal feeding, this tool can just as easily be turned to making bowls basins and sculptures.



Article-no.: 402000 or 402100 w.
3/8" Lp pitch + 8mm stud bolt

ETH-C mini Trough Cutter or ETH-C mini Trough Cutter long

Designed for quickly carving troughs in logs for animal feeding, this tool can just as easily be turned to making bowls basins and sculptures.



3/8"-pitch

3/8" Drive sprocket + chain 3/8" +
guide bar 8 mm or guide bar 12 mm

325"-pitch

325" drive sprocket + chain 325" +
guide bar 8 mm or guide bar 12 mm

Article-no.: 400141, 400142, 400143
o. 400144

NOTE

Attachment is possible for the following available Oregon models:
at 8mm: K041; K095; A095 & A074
at 12mm: D025 & D009



EDER - ATTACHMENTS WITH V-BELT DRIVE

Our belt drive convinces with its proven concept, which has been an integral part of our product range since its foundation in 1970. Due to the operation without lubricating oil (removing the oil pump is necessary), the wood to be processed is not contaminated and thus clean working is ensured. With the belt drive you choose our timeless classic, which has been providing loyal service to our customers for over 50 years.

Available for retrofitting to many commercially available chainsaws. The various attachments can be changed in no time at all.



Article-no.: 020000

ESG1 Bark Stripper

Quickly strips the bark from logs of any diameter.



Article-no.: 130000

ESF1 Carving Cutter

Creating grooves and recesses in wood and for working sculptures



Article-no.: 060000

EPH1 Flat Planer

Creation of smooth flat wood surfaces.



Article-no.: 190000

EKH1 Contour Planer

Planes straight and curved surfaces of wood. Very suitable for peeling or planing the outer edges of boards or for debarking Robinia wood.



Article-no.: 070000

ERH1 Curved Planer

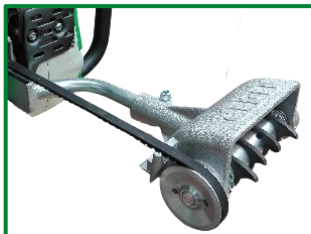
Creation of smooth round wood surfaces up to 30 cm in diameter.



Article-no.: 150000

ERB1 Wire Brush

For the swift removal of old paint or weathering from wood or rust from metals.



Article-no.: 090000

EBF1 Bark Beetle Cutter

For scratching tree trunks in order to deprive the bark beetle of its habitat.



Article-no.: 029504

Set of knives national bavarian forest

Modification kit for the Bark Stripper for the purpose of bark beetle control.



Article-no.: 140000

ETH1 Trough Cutter

Designed for quickly carving troughs in logs for animal feeding, this tool can just as easily be turned to making bowls basins and sculptures.



Article-no.: 020101-020117 and
020601Z-020639Z

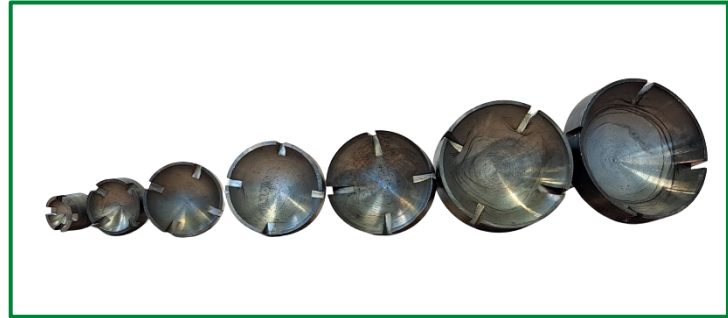
Coupling drum and carrier

See note below.

NOTE

For the attachment with v-belt drive, you need a coupling drum and a housing carrier in addition to the head. We therefore ask you to inform us of the exact specification of your chainsaw.

EDER - EYE CUTTER



Article-no.: 710300

Set of 7 different EDER - eye cutters with different diameters for mounting on machines such as for Dremel, straight grinders or larger cordless screwdrivers. The diameters vary between 10 mm and 40 mm and can be mounted on machines via a 6 mm shank.

Field of application:

Eye cutter, the name says it all. Ideally suited for milling typical eye features on wooden sculptures such as bears, owls, humans, etc. In addition to the perfectly round shape, high speeds ensure a slight burn inside the resulting ring. The shape and appearance of an eye is created. Depending on the pressure and angle applied, the eye features can be individually shaped. If the eye cutter is set at an angle, fine lines can also be burnt in for structuring (e.g. in bowls, cups, etc).

EDER - PRESS TOOL



With the EDER - press tool steel ropes with diameters from 8mm to 16mm can be pressed according to standards.

Advantages over conventional press tool:

- Mobile press tool due to multi-stage pressing process.
- The EDER - press tool can be operated with a hand pump, with an air-hydraulic pump or with a battery pump.
- The press is made in several pressing processes according to DIN EN 13411-3 in 8mm - 16mm.
- The jaws in our press tool are exchangeable.
- The Kuratorium für Waldarbeit und Forsttechnik e.V. presented us with the kwf members award on the occasion of the 18th KWF conference for the EDER - press tool with safety thimbles.





EDER - press tool with hand pump

The EDER - press tool is applied with a hand pump with a pressing pressure of 700 bar.

Article-no.: 710508



EDER - press tool with air-hydraulic pump

The EDER - press tool is applied with an air-hydraulic pump with a press pressure of 700 bar, which is driven by means of 8 bar air pressure.

Article-no.: 710509



EDER - press tool with battery pump

The EDER - press tool is applied with a battery pump with a pressing pressure of 700 bar, powered by 18V Milwaukee or Makita battery.

Article-no.: 710510



Thimble with protective sleeve:

This thimble is fully loadable from both sides.
Available in sizes 8, 10, 12 and 14.

Article-no.: 710514, 710515,
710516, o. 710517



Press jaws:

These press jaws are available in
different sizes for steel cables from
8mm - 16mm.

Article-no.: 710501, 710502, 710503, 710504,
710505, 710506, 710507 o. 710518

EDER - SPLITTING DEVICE

EDER - HYDRAULIC UNIT



Article-no.: 010000

The **EDER - splitting device** is suitable for splitting tree trunks, regardless of length and diameter. Even splitting fibrous tree trunks is made easier and faster with this device. The pieces to be split are split once or several times in their respective position, lying on the ground. The device is also suitable for splitting tree crowns. It has a weight of 16 kg (without hoses).



Article-no.: 240000

The **EDER - hydraulic unit** has been optimized to use with our hydraulic splitting device. It provides oil pressure and oil flow to generate high power at low time. The unit is powered by an economical 4-stroke petrol engine with a power output of 4.8 kW (6.5 hp). The unit which weighs approx. 30 kg is built into a support frame and can be easily transported by one or two persons. With a volume flow of 12 litres per minute and a working pressure of 150 bar (max. 210 bar), the unit is also suitable for other hydraulic equipment.



EDER - Maschinenbau GmbH
Schweigerstraße 6
D-38302 Wolfenbüttel
Phone +49 (0) 5331 / 90216-30
Fax +49 (0) 5331 / 90216-56
www.eder-maschinenbau.de
vertrieb@eder-maschinenbau.de
Social Media:

